

MightyBoard Rev G Users Manual

Compiler: Koko.xu

Date: Oct 7, 2014

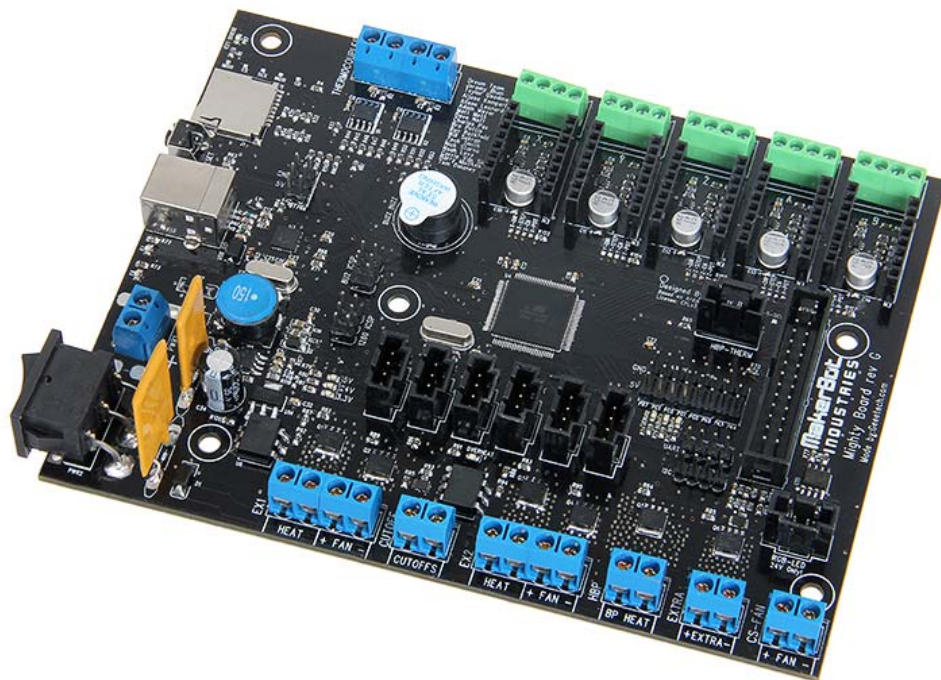
Reviewer: Eric, Candy

Carl, Alina

Date: Oct 11, 2014

Approver: Linda.Fan

Date: Oct 13, 2014



Copyright Declaration

The copyright of this specification belongs to the Shenzhen GETECH CO., LTD. (hereinafter referred to as the "Geetech"), and all rights reserved. No part of this specification should be reproduced or extracted in any forms or means without the prior written consent of Geetech by any company and individuals.

Technical Support

If you are interested in the technology of 3 D printing, flight control and U-home, welcome to Geetech, we have series of made-up products, main boards, modules and a variety of peripherals for you. Or if you are looking for relevant information or technical support, please login our forum where you can find anything you want about open source. To know more about our new products, please visit www.geetech.com, we will serve you wholeheartedly.

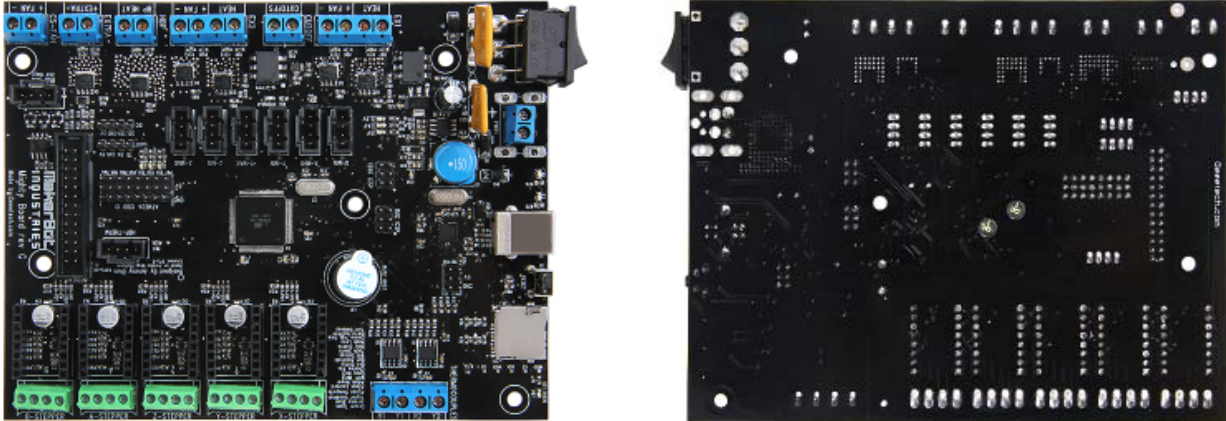
1 Introduction

MightyBoard is a DIY Open Source 3D Printer Control Board designed by MakerBot company, it is mainly used in desktop 3D printer DIY creation. It adapts ATMEGA's Atmega1280 as the master control chip. MightyBoard provides stable and excellent performance while reducing the difficulty of development; it is very suitable for those who enjoy DIY. What's more, MightyBoard supports dual extruders, with the control software of MakerBot, it can realize double color printing to make printed items more attractive.

Features:

1. Supports dual extruders.
2. Adopts professional thermocouple temperature measurement chip, to ensure accurate temperature measurement.
3. The heating module has protection function to make sure the safety of using.
4. Unique RGBLED display.
5. Compatible with the Arduino development environment, easy to develop further functions.
6. Use active cooling in the printing process to make sure the printed items can form better.

1.1 Overview and Hardware Resources



1-1 (MightyBoard front and back images)

Size: 154mm x 120mm

Weight: 130g

MightyBoard adopts the Atmega1280 IC and Atmega16u2 that is completely compatible with Arduino. Stepper motor driver module can choose A4988 or DRV8825 motor driver IC, so as to adapt to the needs of different frame structure. MightyBoard uses the thermocouple temperature measurement, with MAX6675 thermocouple temperature measurement IC, to ensure the accuracy of temperature measurement.

1.2 Software Resources

The software programs of MightyBoard are provided by the MakerBot Company. MightyBoard can be used as the host computer control software of the Replicator G. Replicator G can not only control MightyBoard to printer, but also can upgrade MightyBoard's firmware through the serial ports, so you have no need to find the corresponding engineering documents.

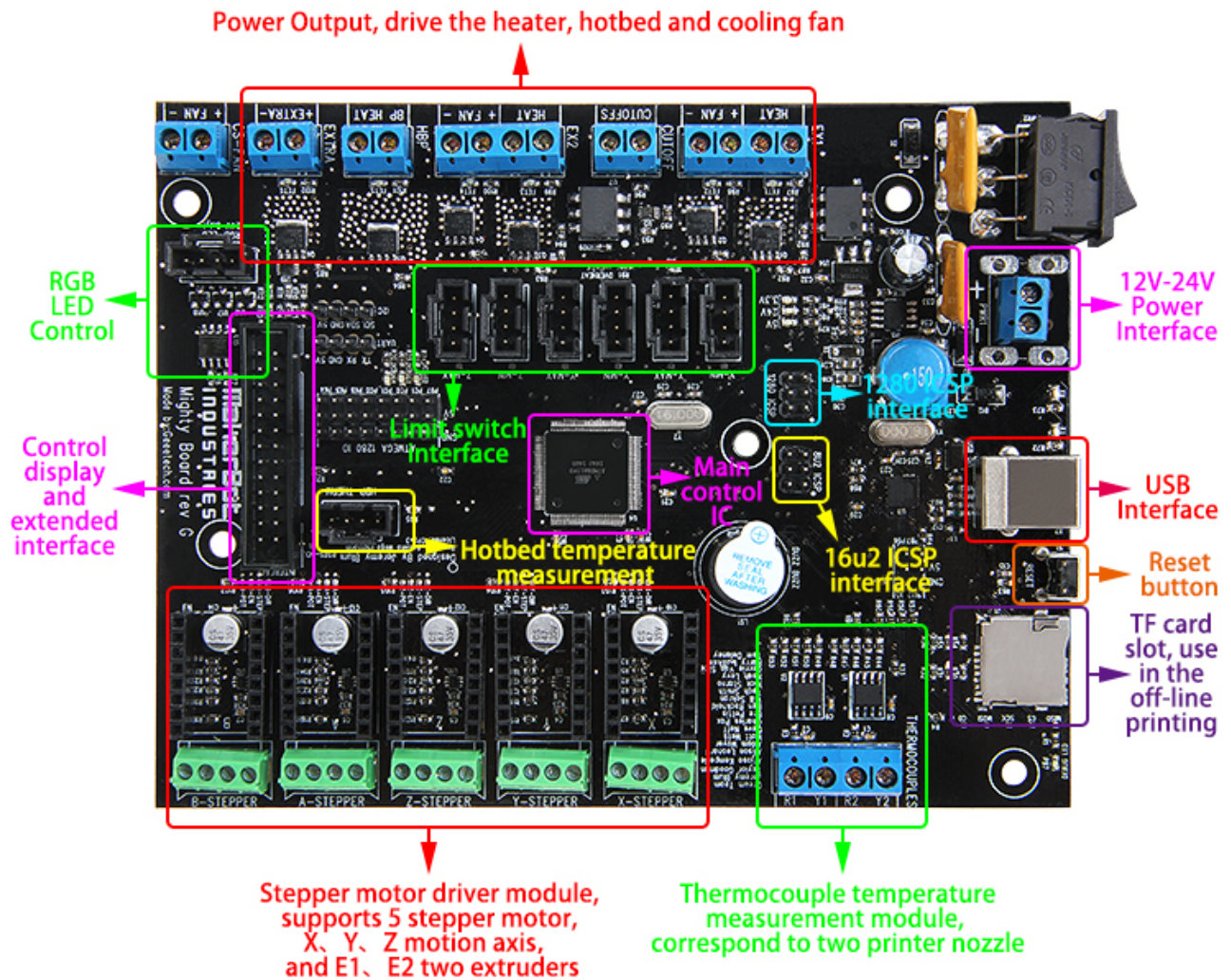
1.3 Source

Software: ReplicatorG-0040-Installer <http://www.geeetech.com/wiki/index.php/Download>

Firmware: MightyBoard Firmware-master <http://www.geeetech.com/wiki/index.php/Download>

2 Interfaces

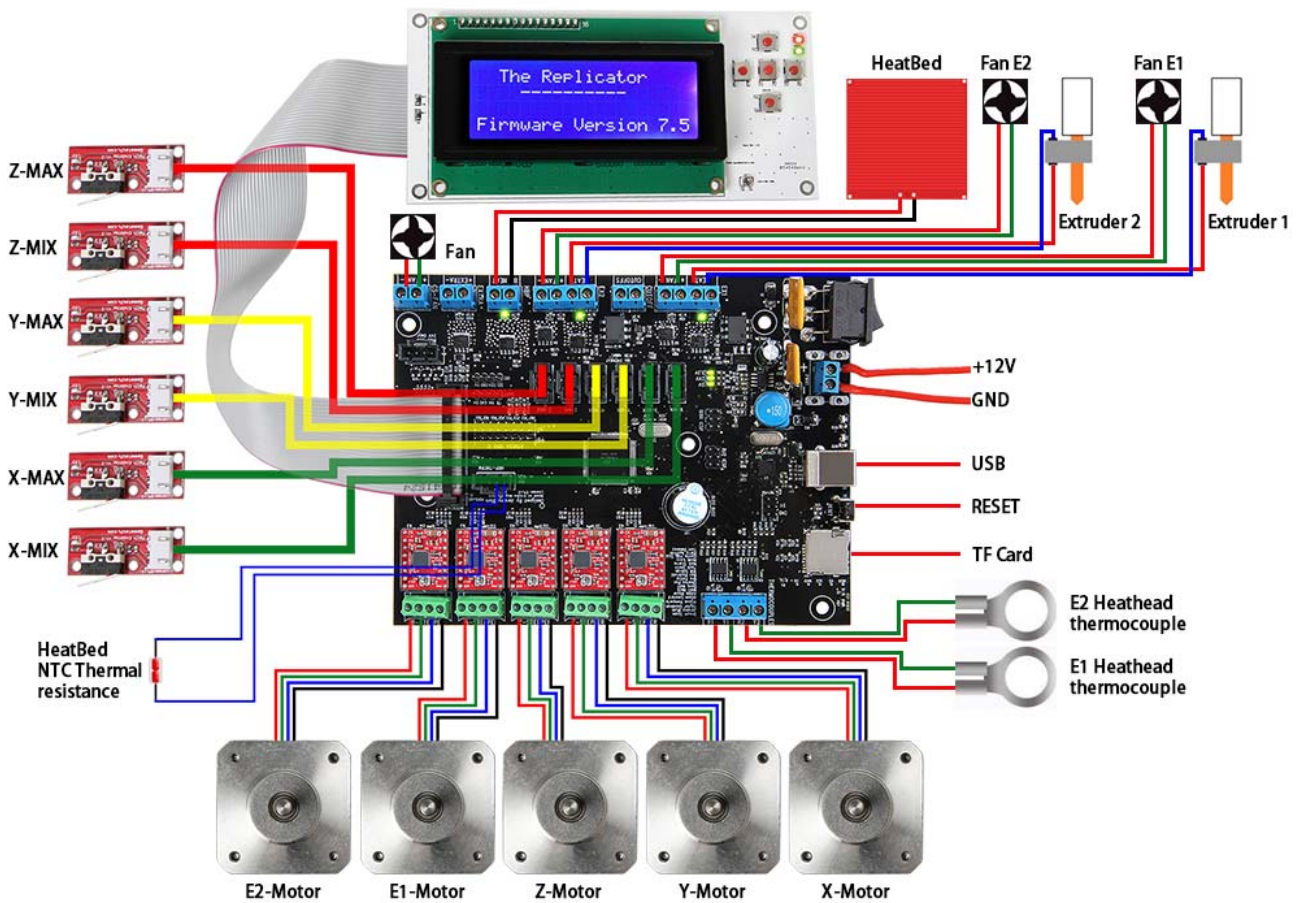
2.1 Interface Layout



Note: The display and extended interface of MightyBoard only support MightyBoard LCD2004 control panel. If you want to use other equipments, you should develop the corresponding program.

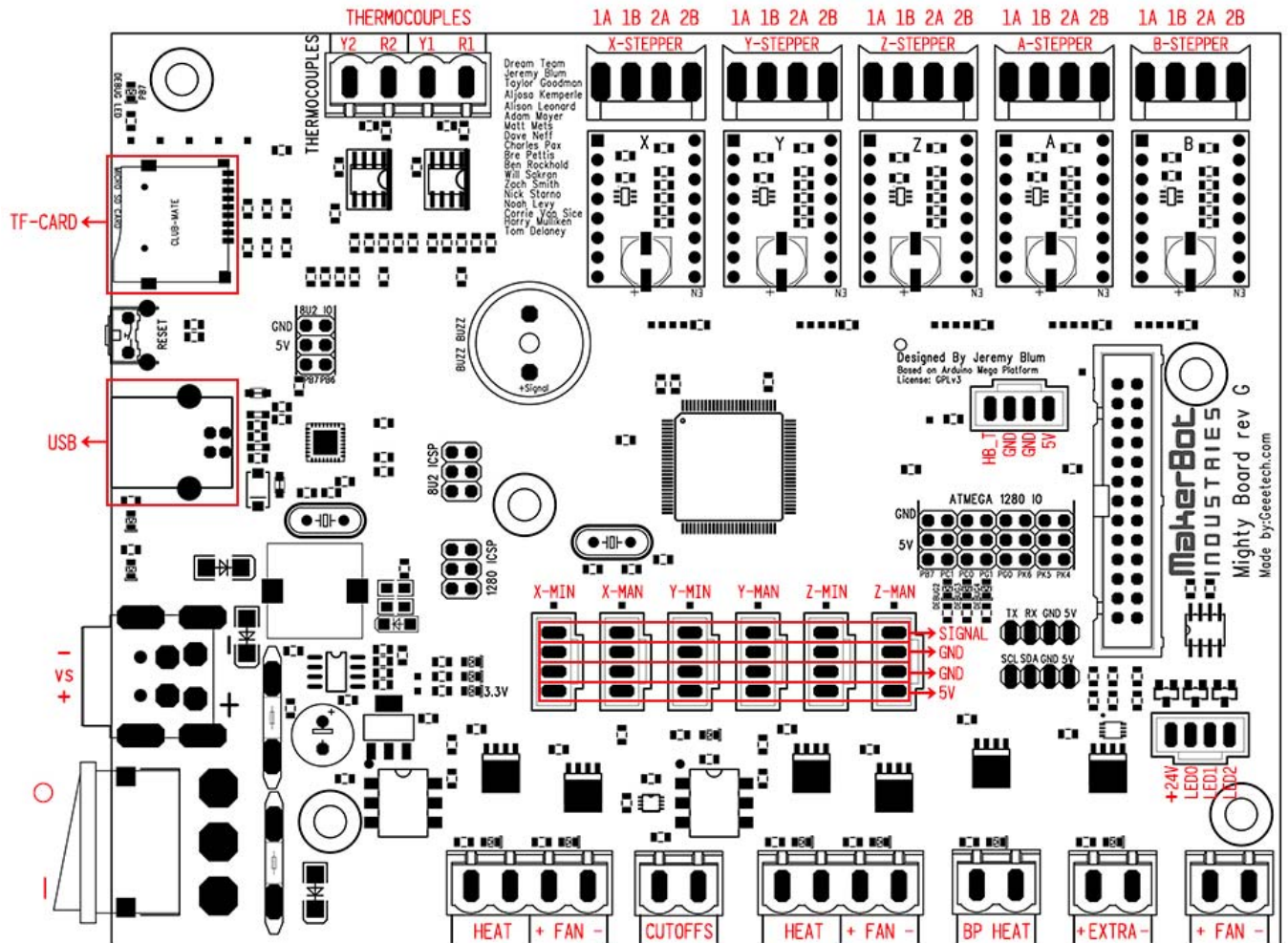
3 Development Environment setting

3.1 Interface Connecting and Setting



3-1

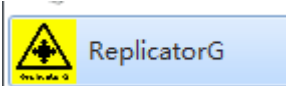
Signal polarity scheme of interfaces

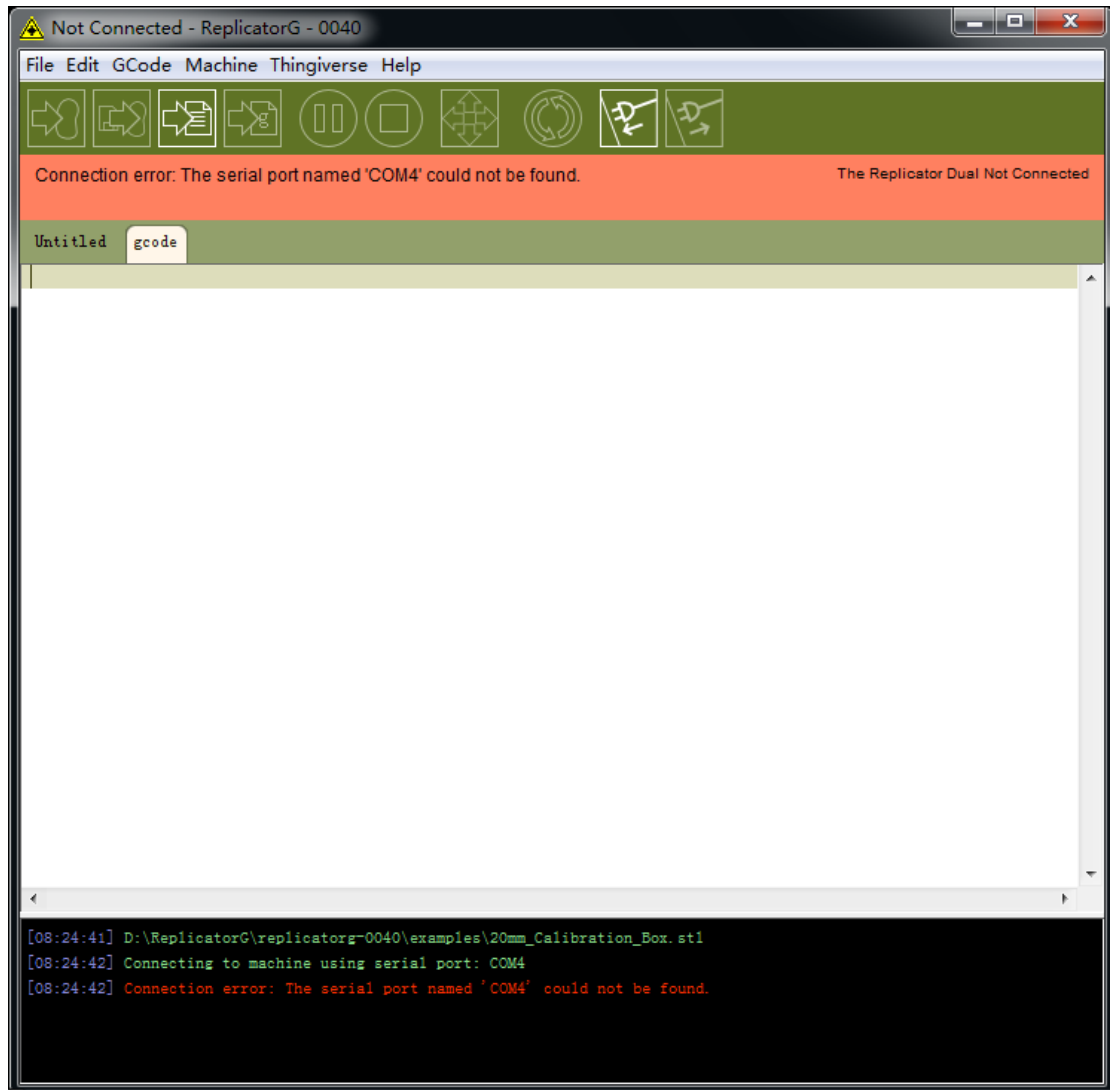


3.2 File Burning

In this chapter, we will upload firmware to MightyBoard with Replicator G as an example.

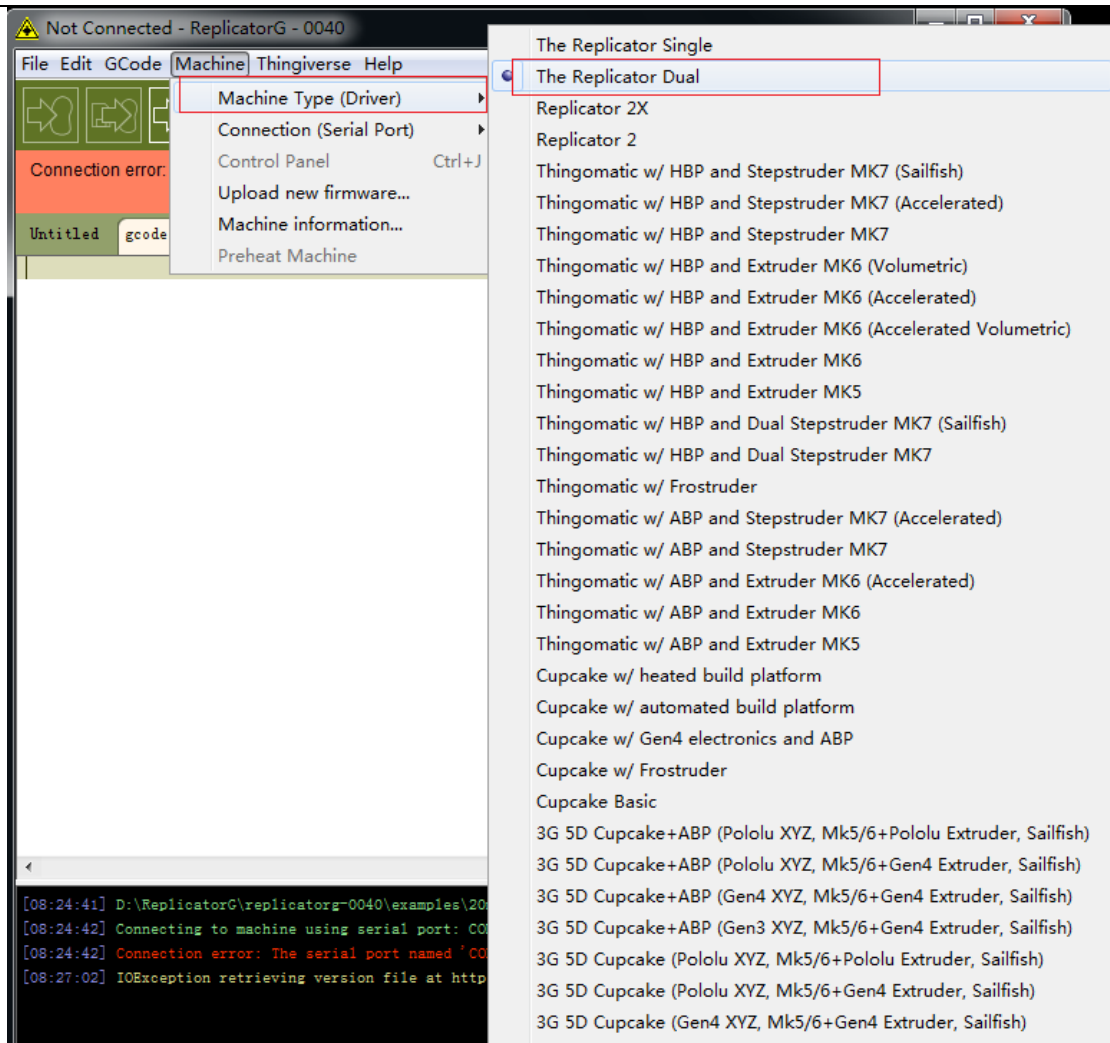
Open Replicator G(Replicator-0040 for Windows)





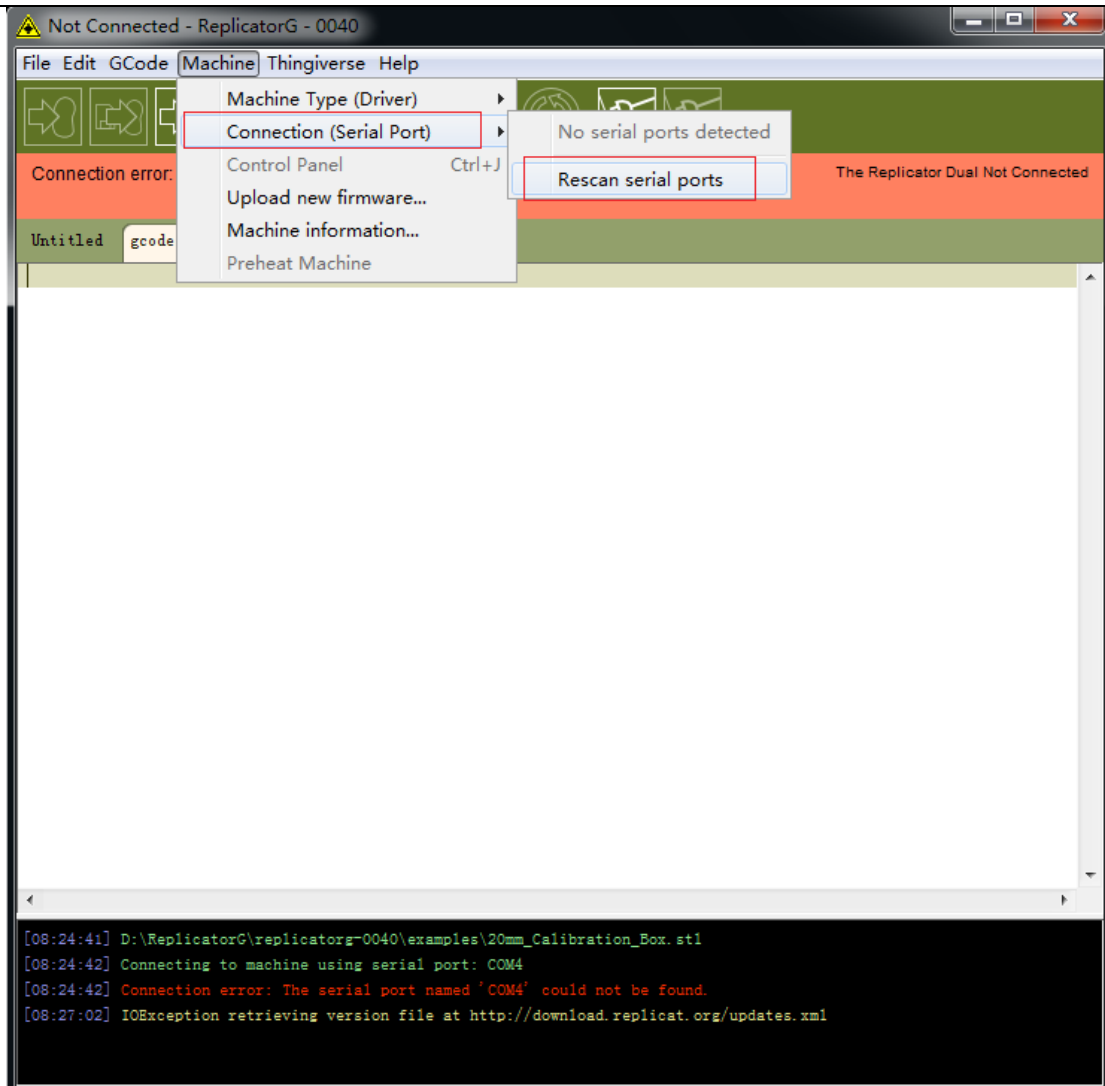
3-2

Click “Machine”, choose the type of printer: The Replicator Dual, as follow,

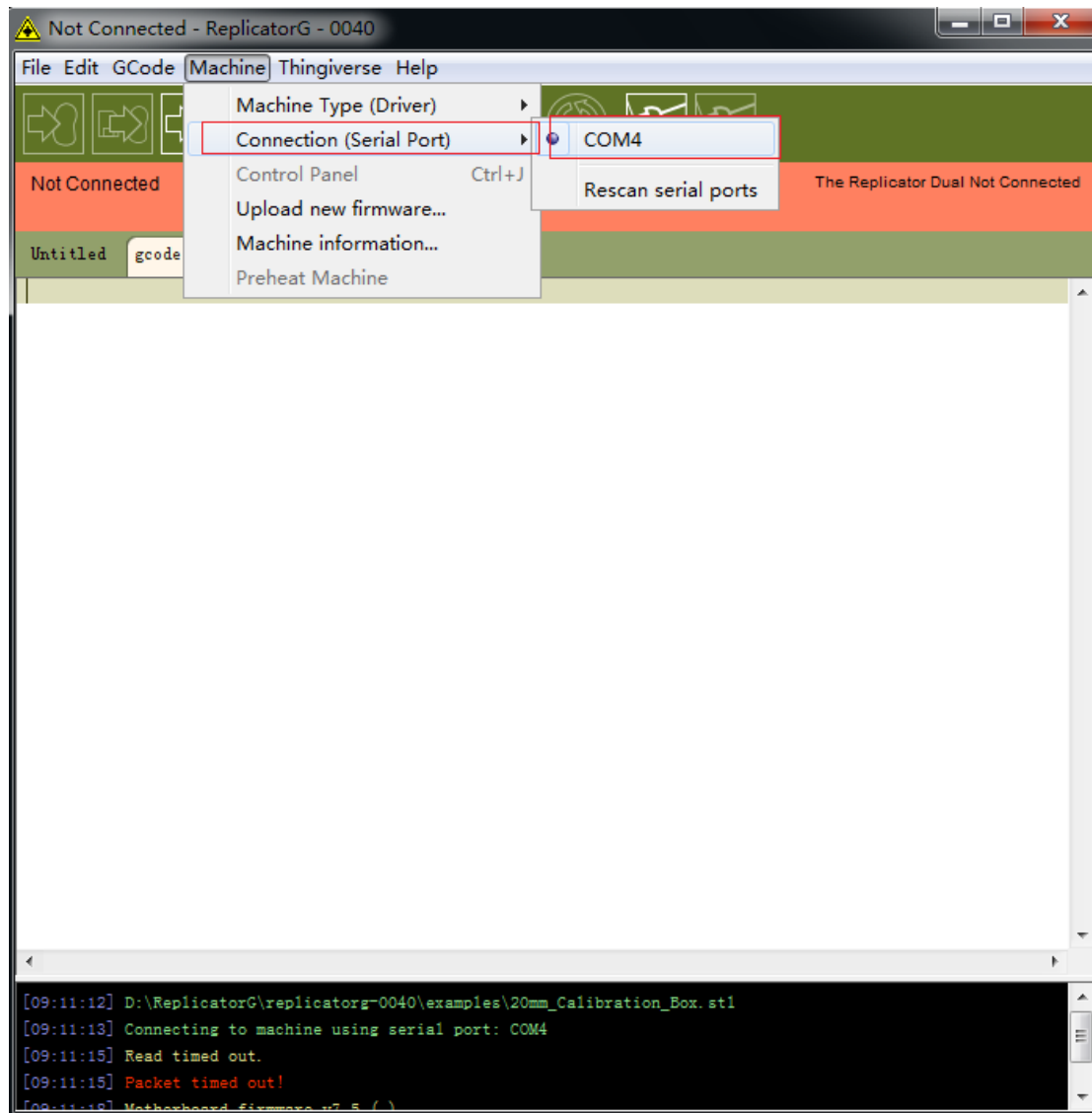


3-3

Click “Machine”, choose “Connection (Serial Port)”, if you can’t find the serial port, click “Rescan Serial Ports” (3-4). If you still can't find a serial port, please disconnect the USB, then reconnect it, and restart the software. If you find the serial port, select the COM port corresponding to your board.(3-5)

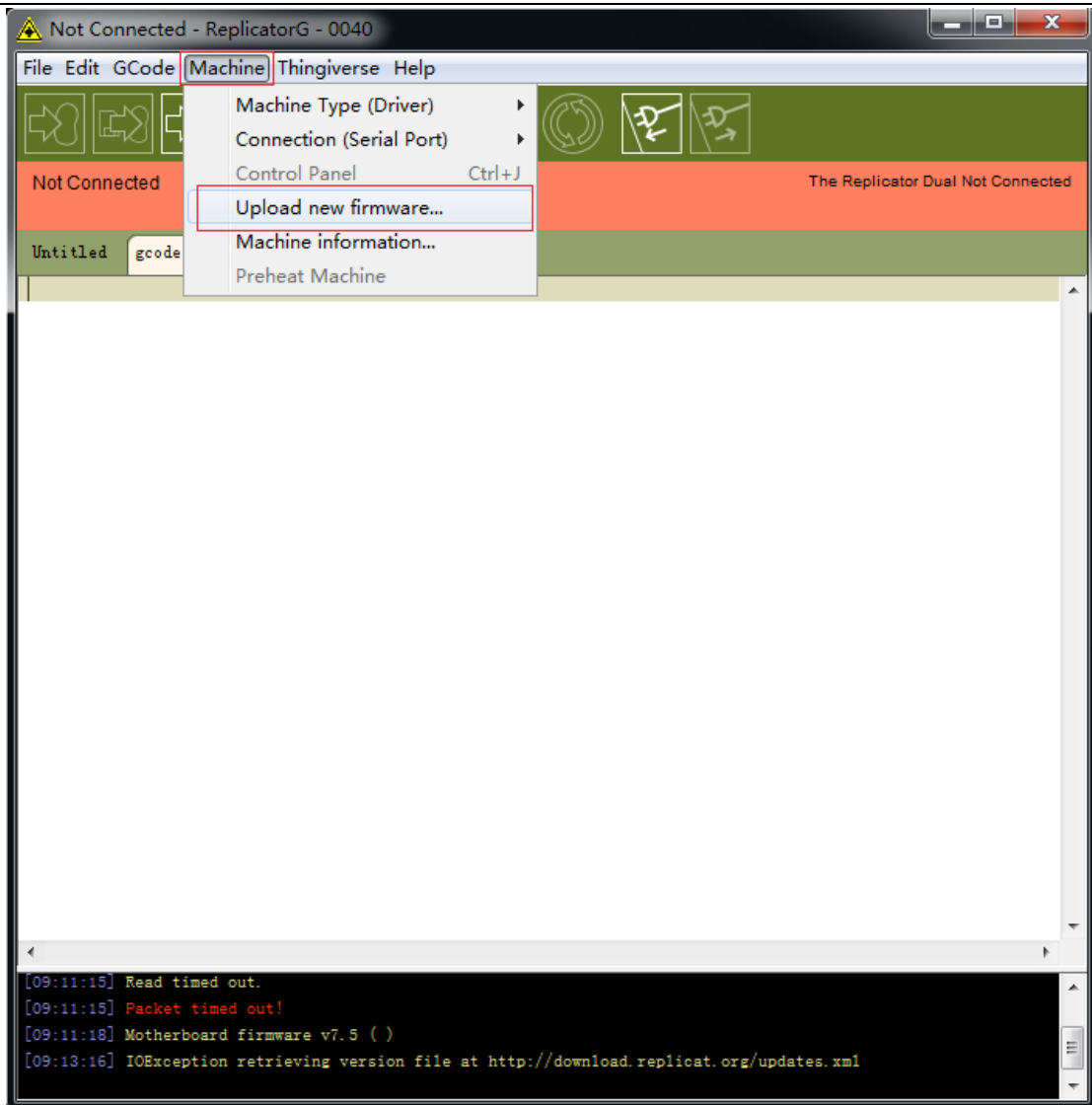


3-4

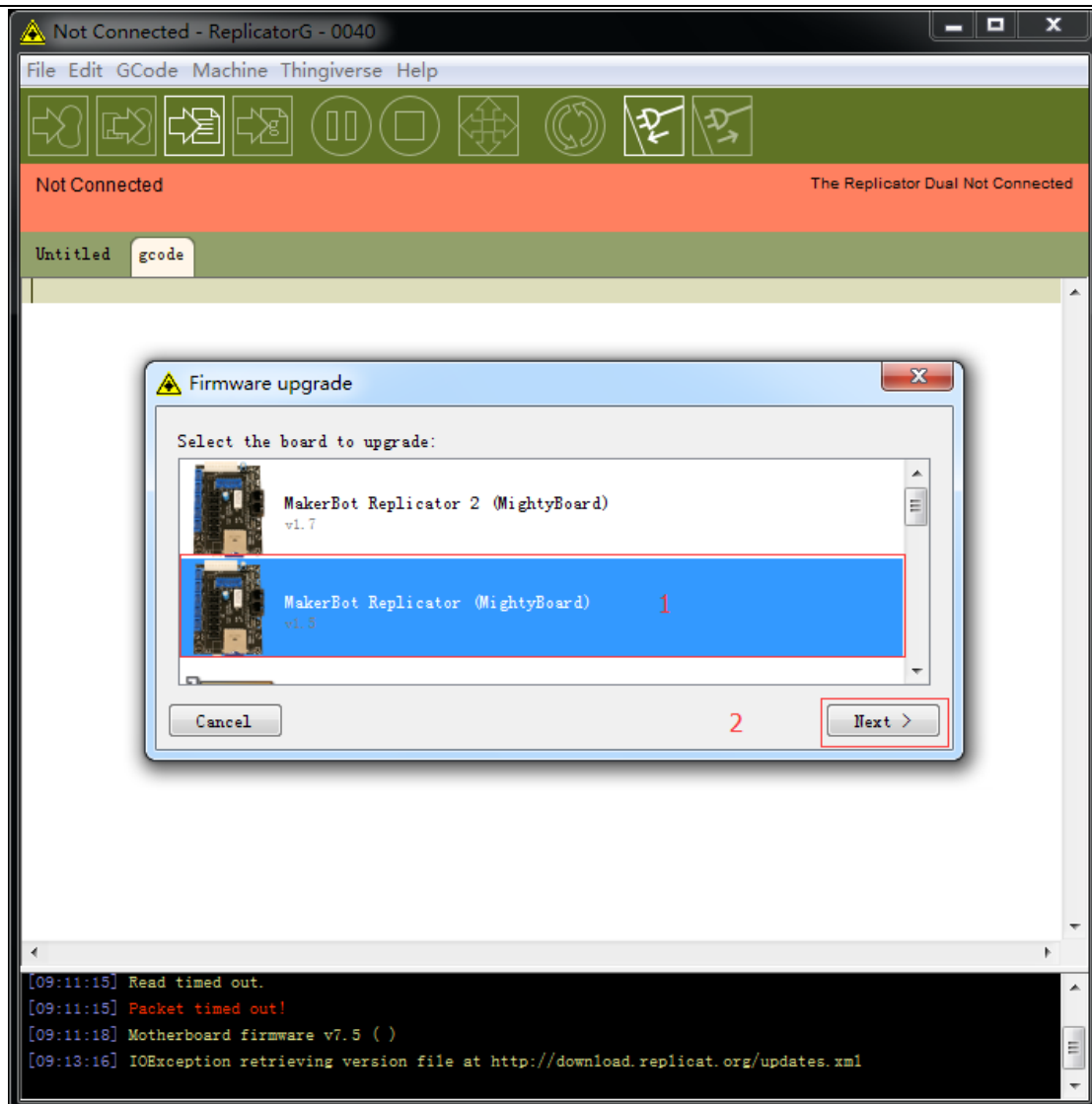


3-5

Click “Machine”, choose “upload new firmware” (3-6). And then click “MakeBot Replicator (MightyBoard) v1.5” and click Next.

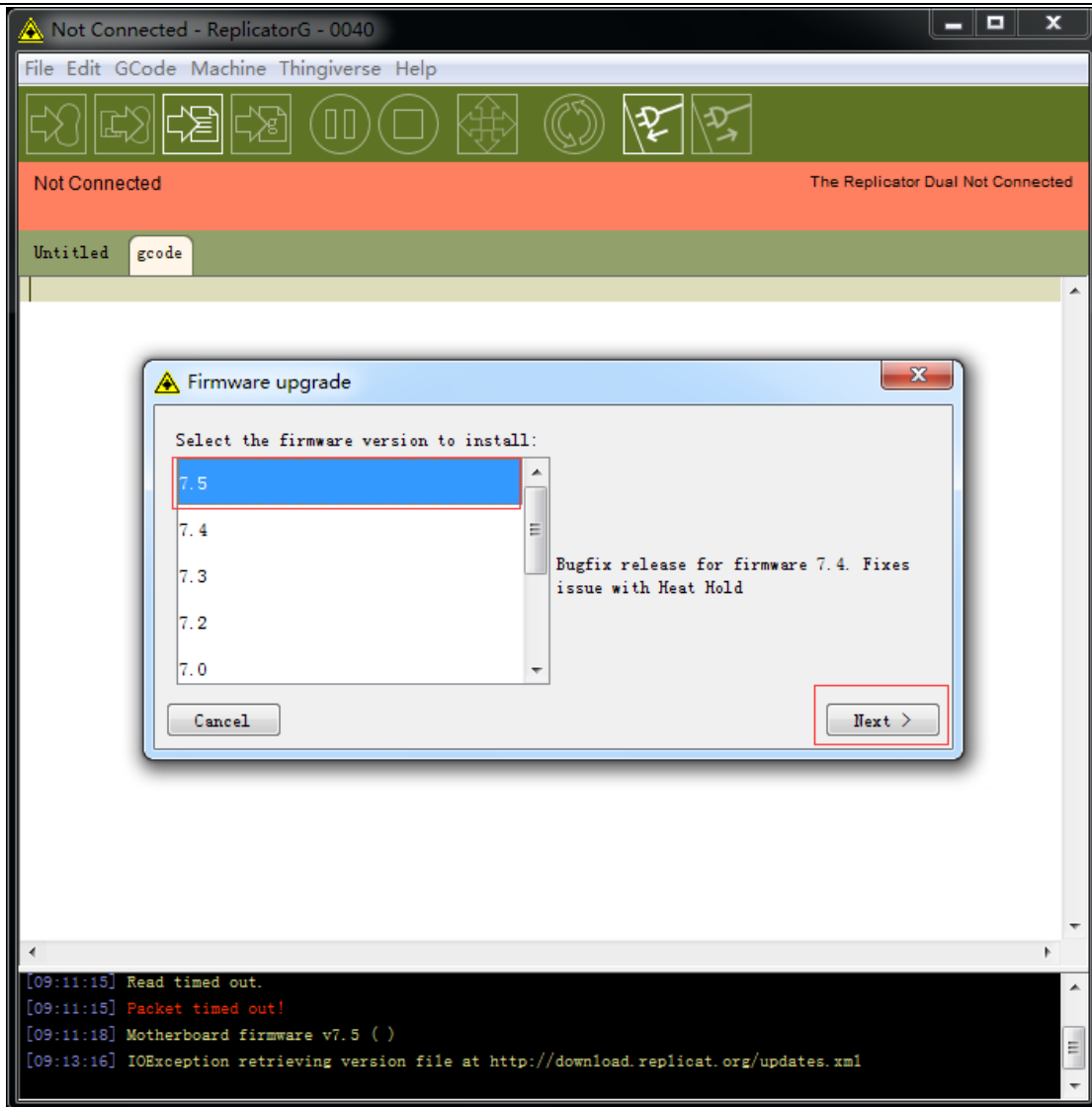


3-6



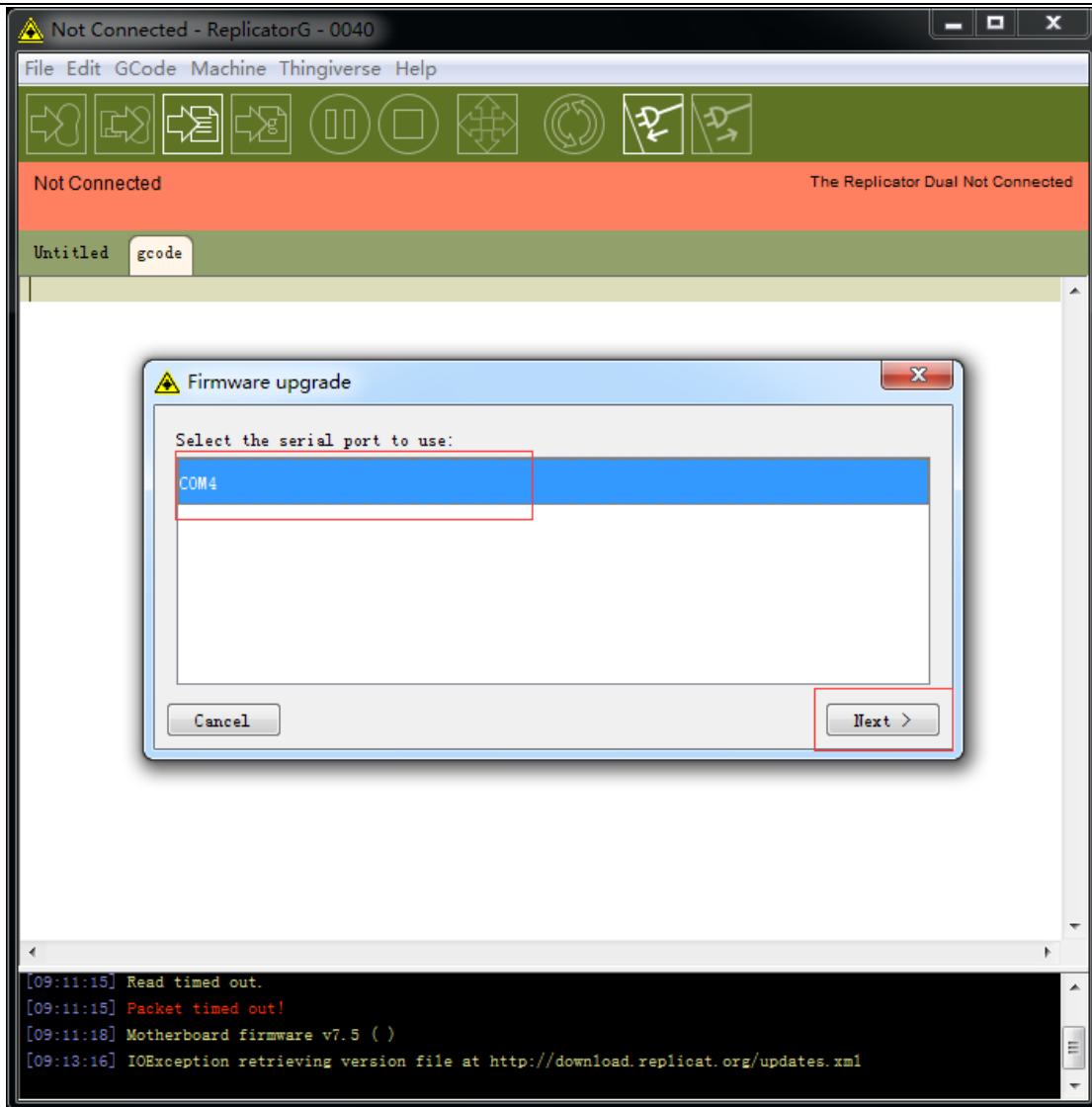
3-7

Choose “7.5” and then click Next.(3-8)



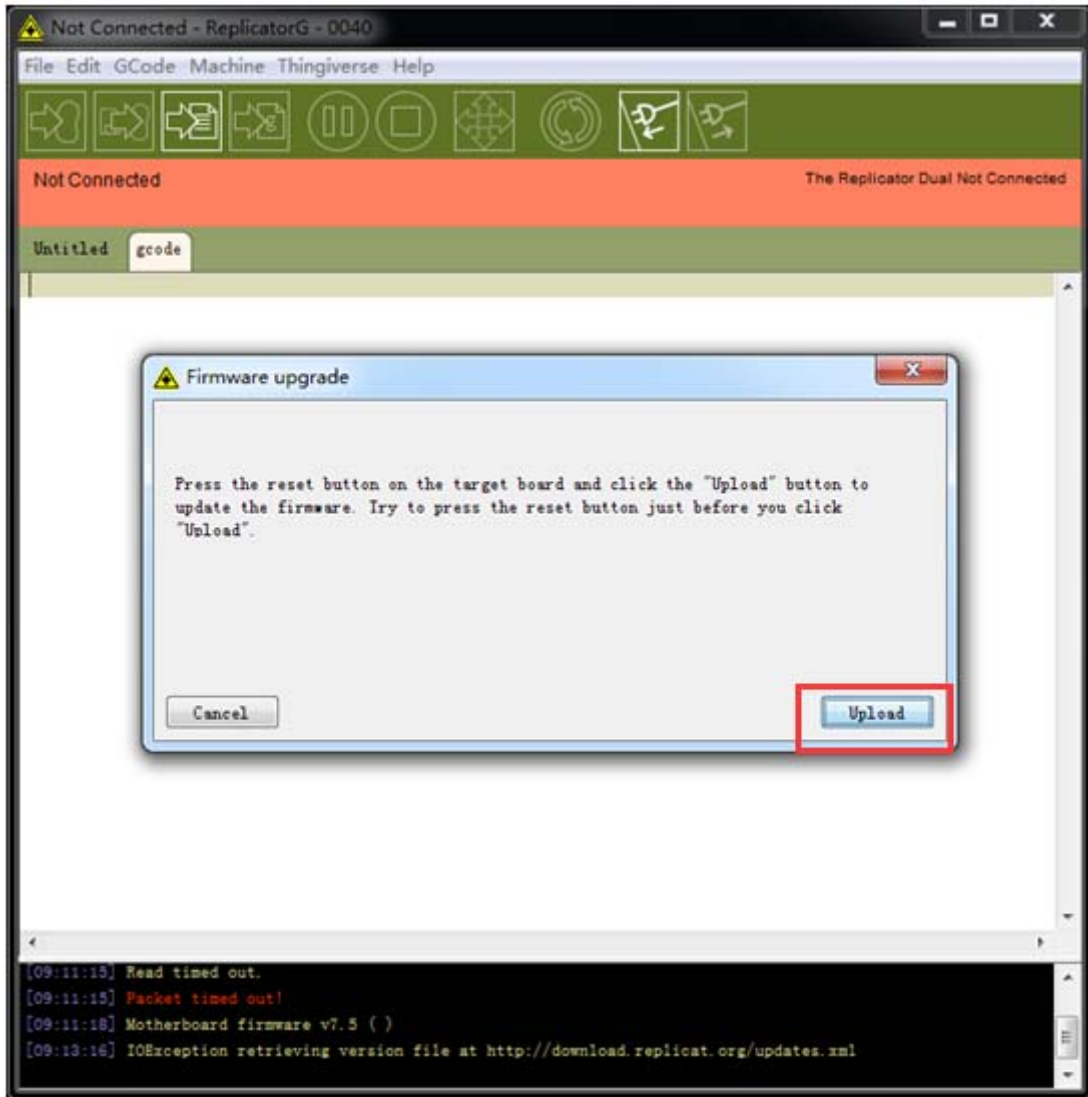
3-8

Choose COM port and then click Next.(3-9)



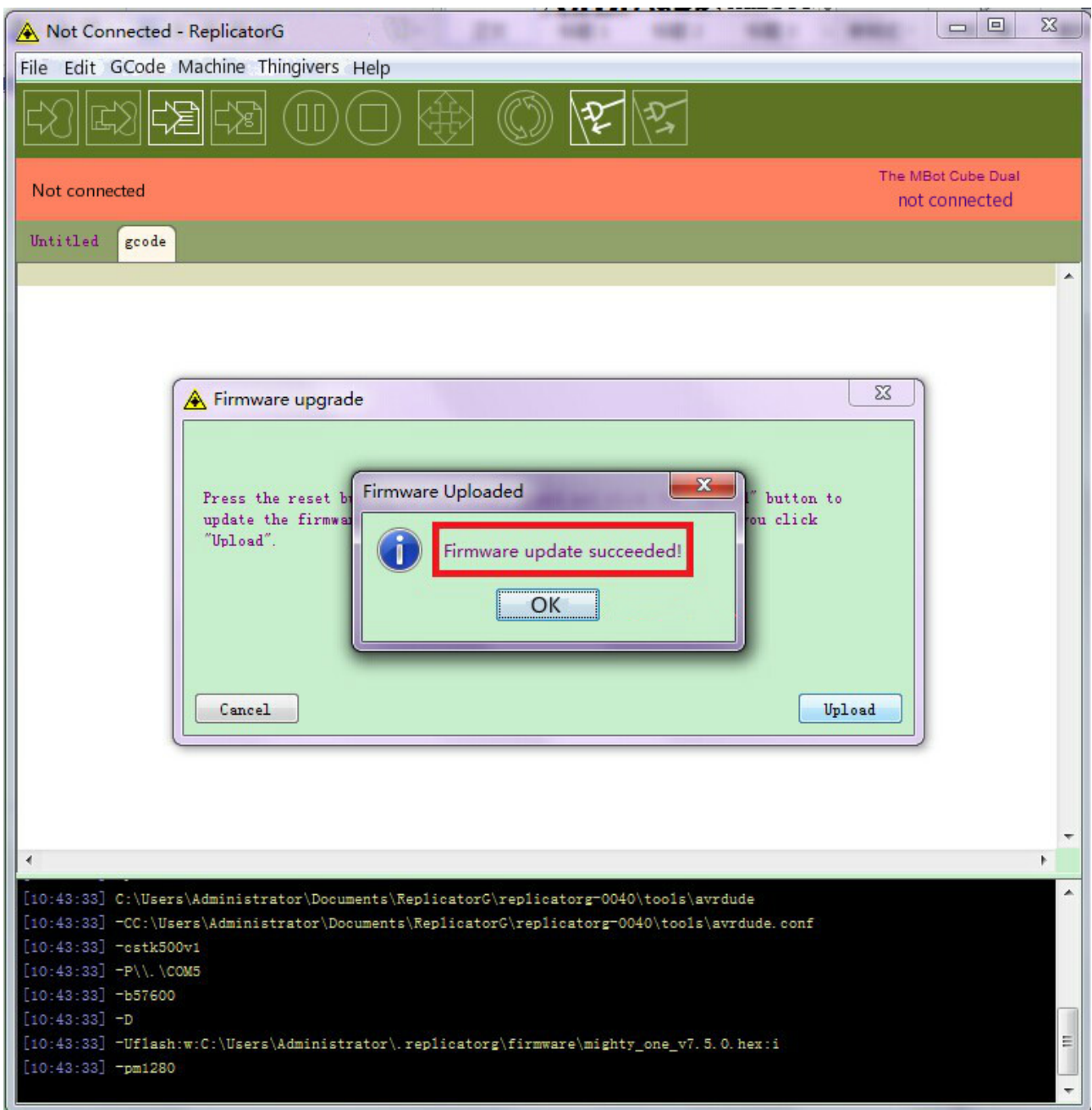
3-9

Click "Upload". (3-10)



3-10

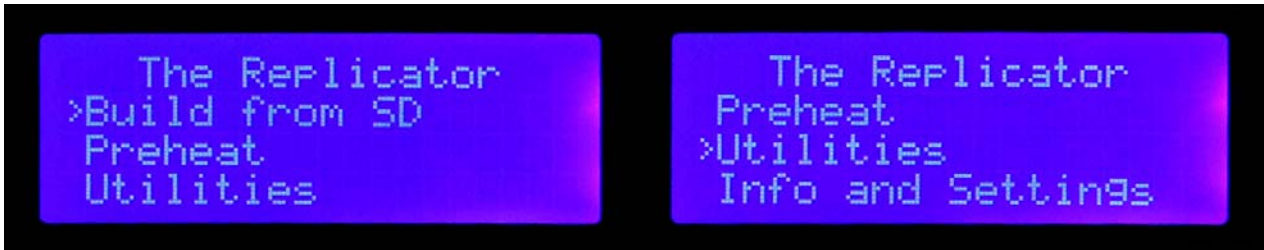
In the process of uploading, “TX” LED will blink, and then “RX”LED will blink. When the two LEDs stopped blinking, the firmware update succeeded. (3-11)



3-11

3.3 Software Setting

After Startup, MightyBoard provides four kinds of operation, “Build from SD”、“Preheat”、“Utilities” and “Info and Settings”.(3-12) (3-13)

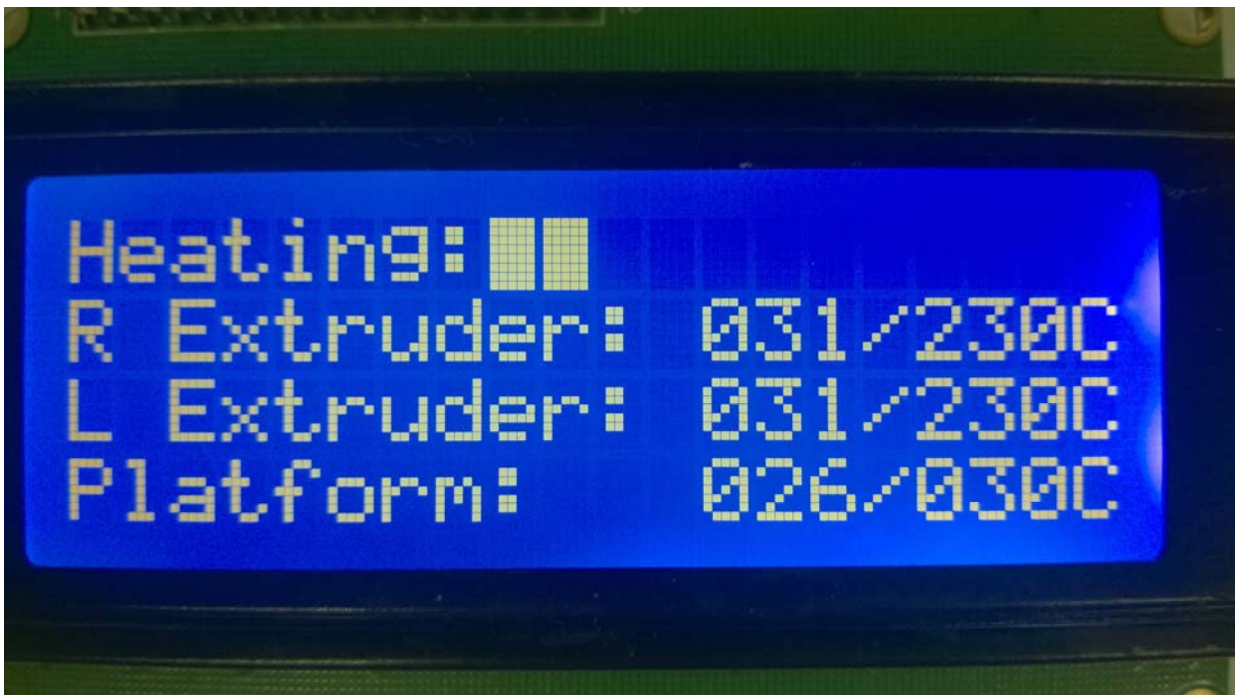


3-12

3-13

“**Build from SD**” to print the files on the SD or TF card.

“**Preheat**” to preheating printer nozzle and hotbed, used when changing filament, cleaning extruder and calibrating the temperature. (3-14)



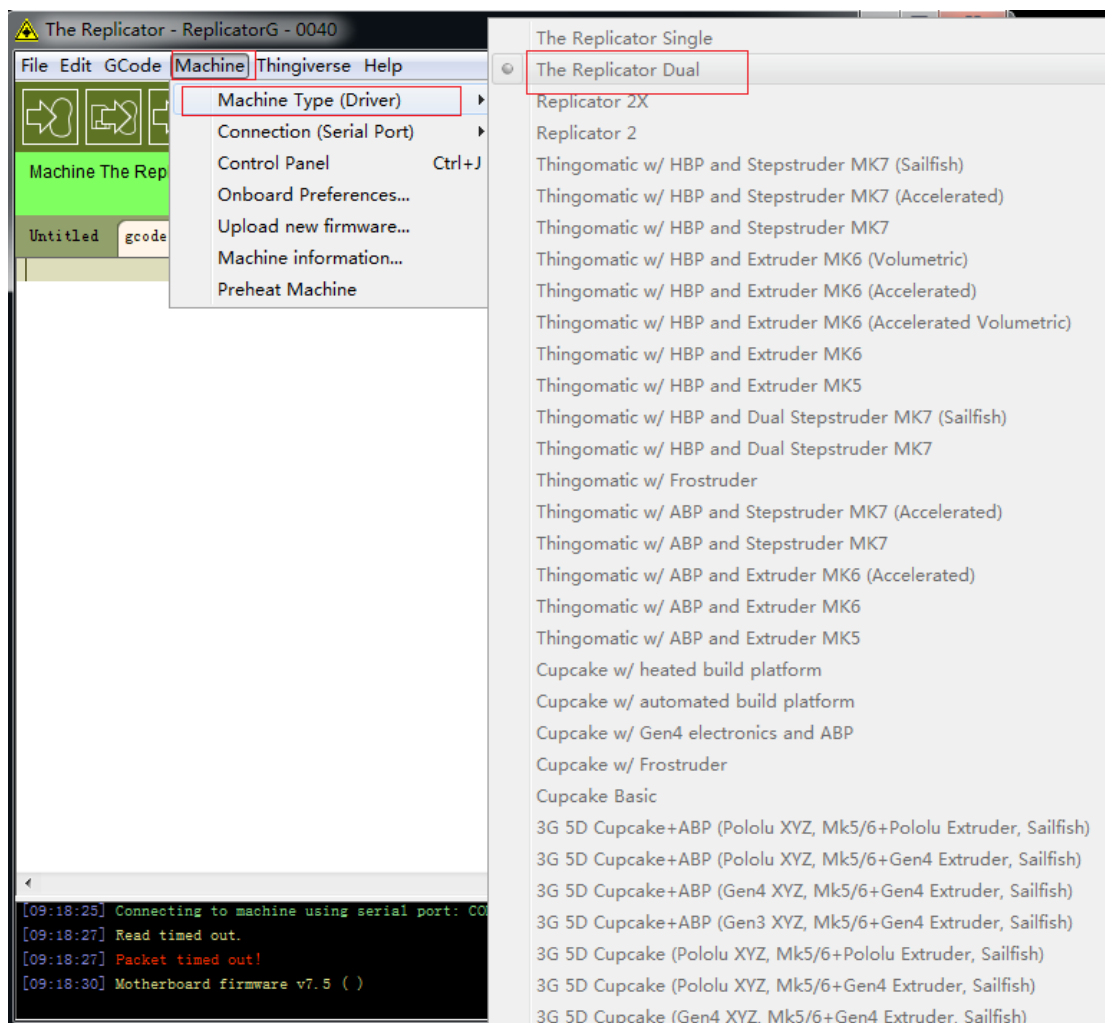
3-14

“**Utilities**” to manually control the direction of X, Y, Z axes, make the printer nozzle back to the

origin and calibrate the relative position between the print platform and printer nozzle.

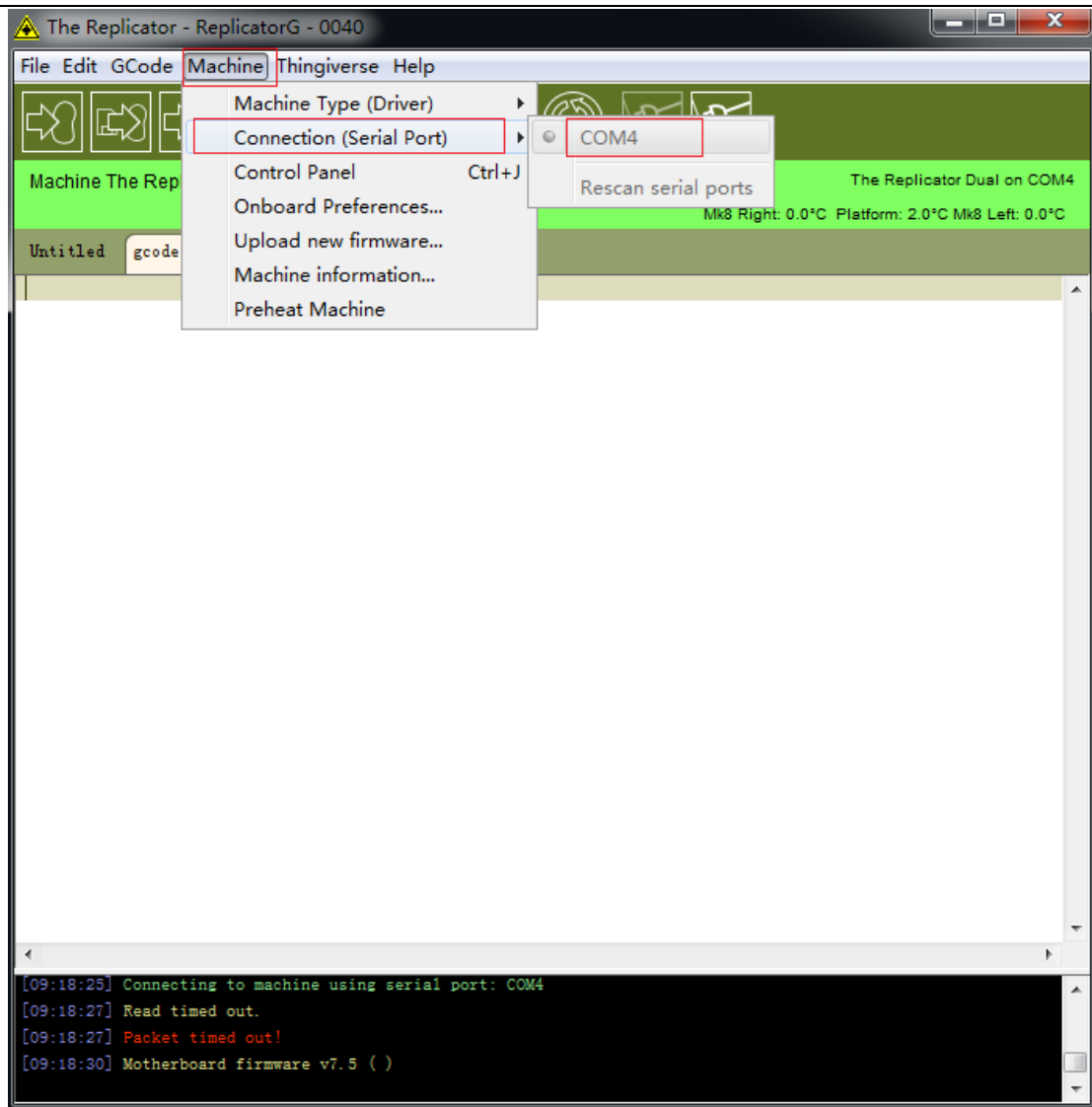
“Info and Settings” to check the version of software, set the preheating temperature, restore factory settings, and view the duration of operating

Print instructions: first print a 20mm x 20mm cube as an example, use USB cable to connect motherboard and computer, open Replicator G, choose “Machine”→“Machine Type(driver)”→“The Replicator Dual”.(3-15)



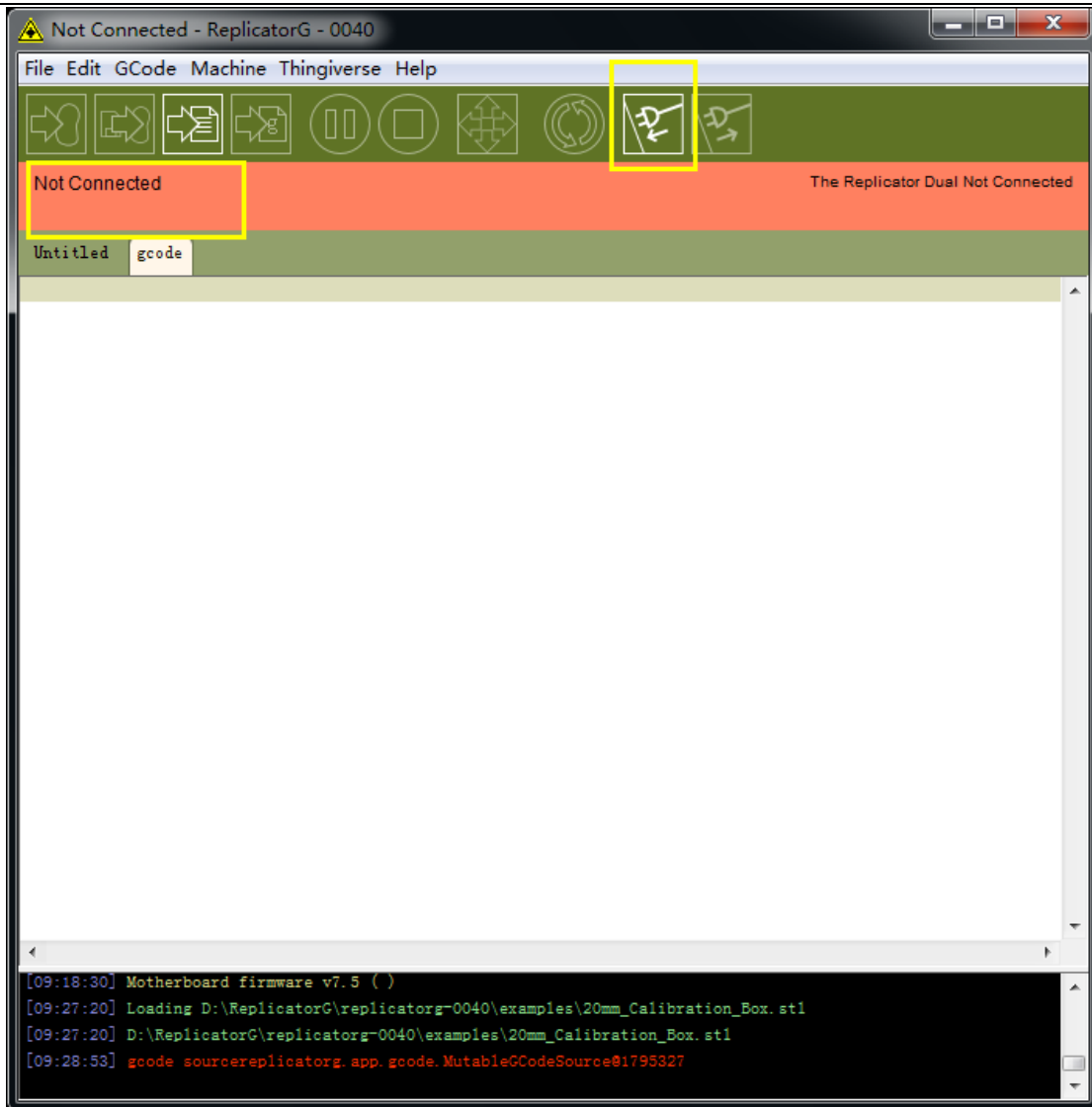
3-15

Then choose “Machine”→ “Connection (serial port)” and choose the corresponding port to connect. (3-16)

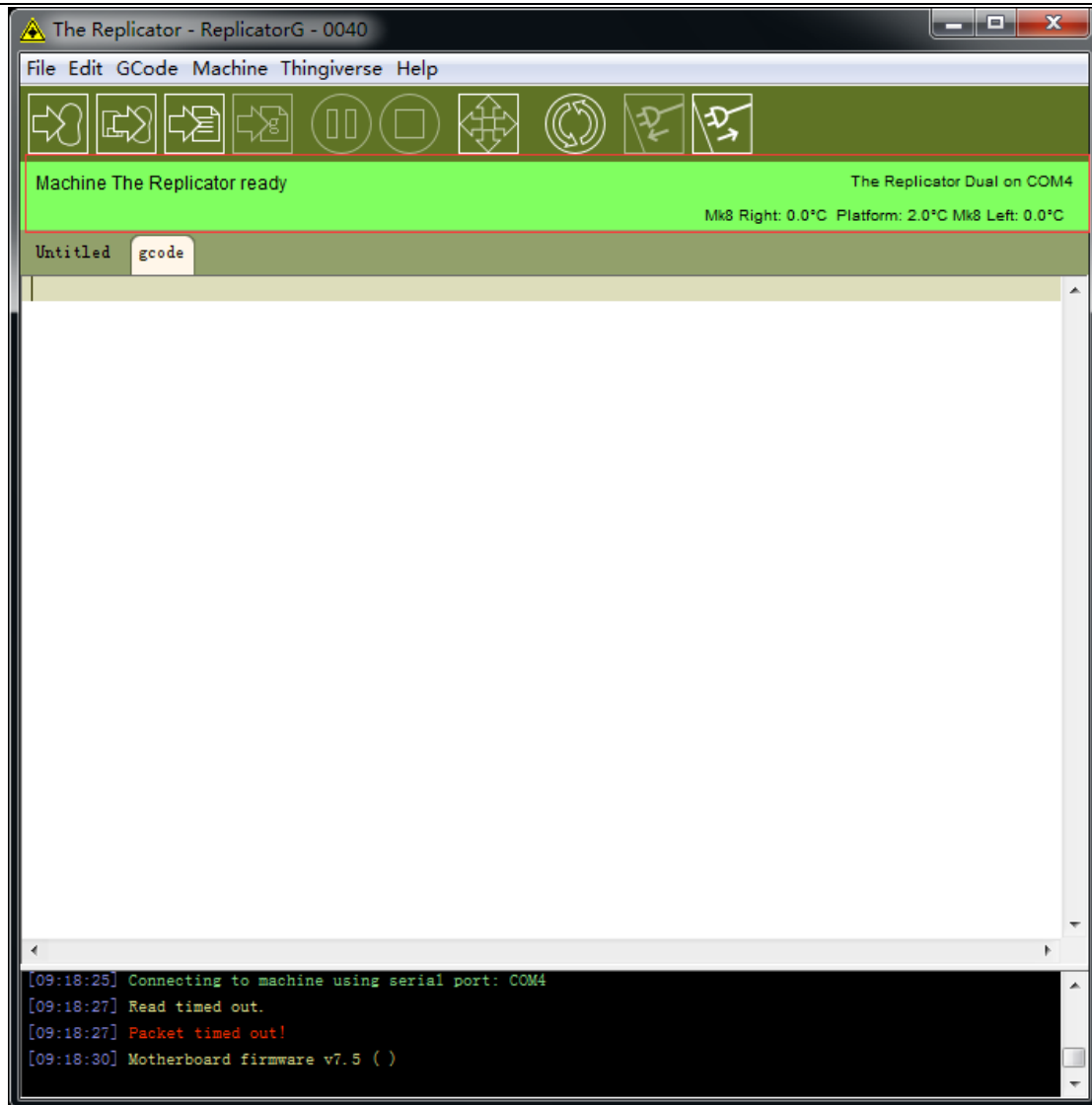


3-16

Click the red icon in the frame to finish connection, (3-17) if the connection is successful, the red bar will turn green. (3-18)

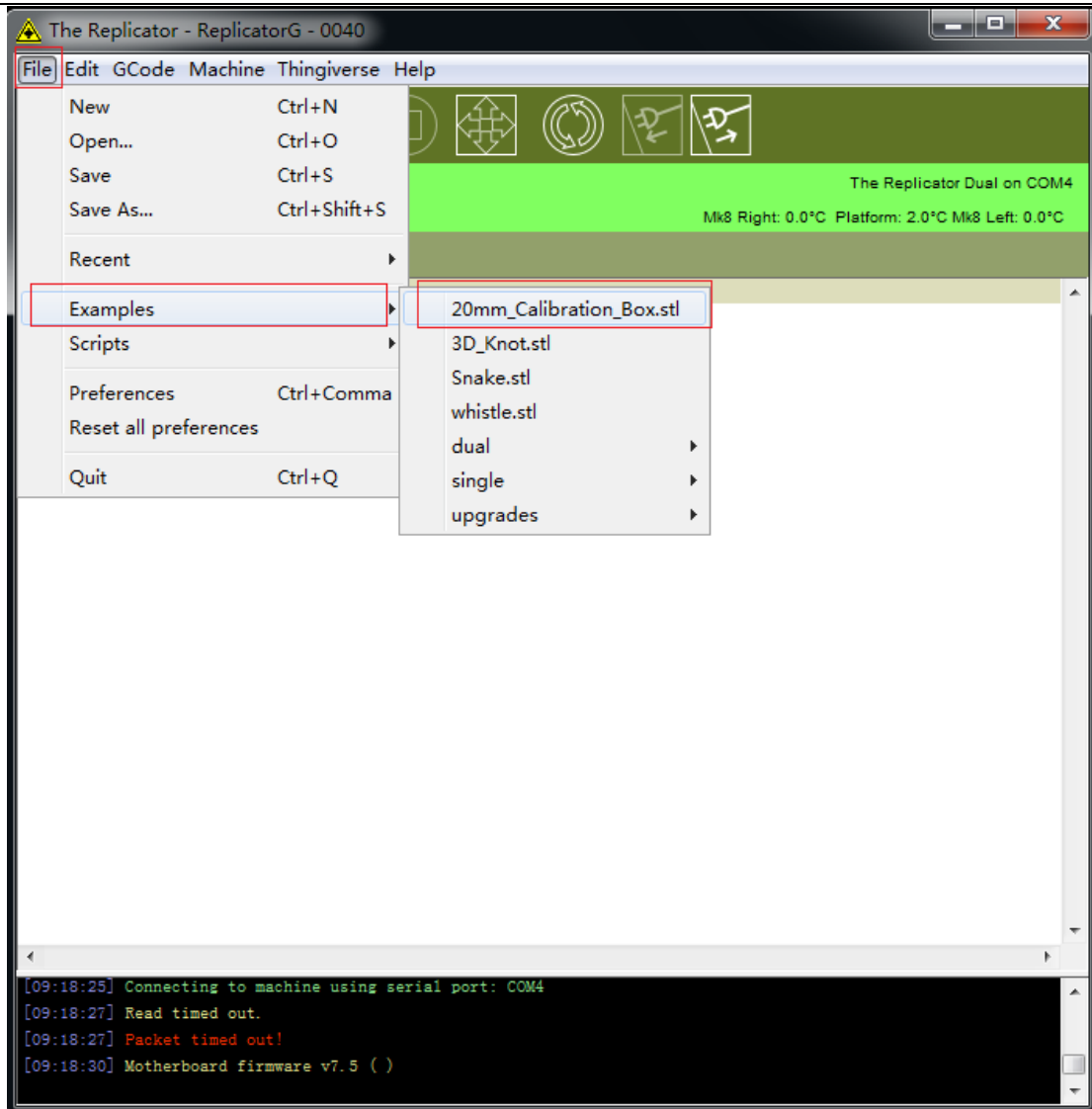


3-17

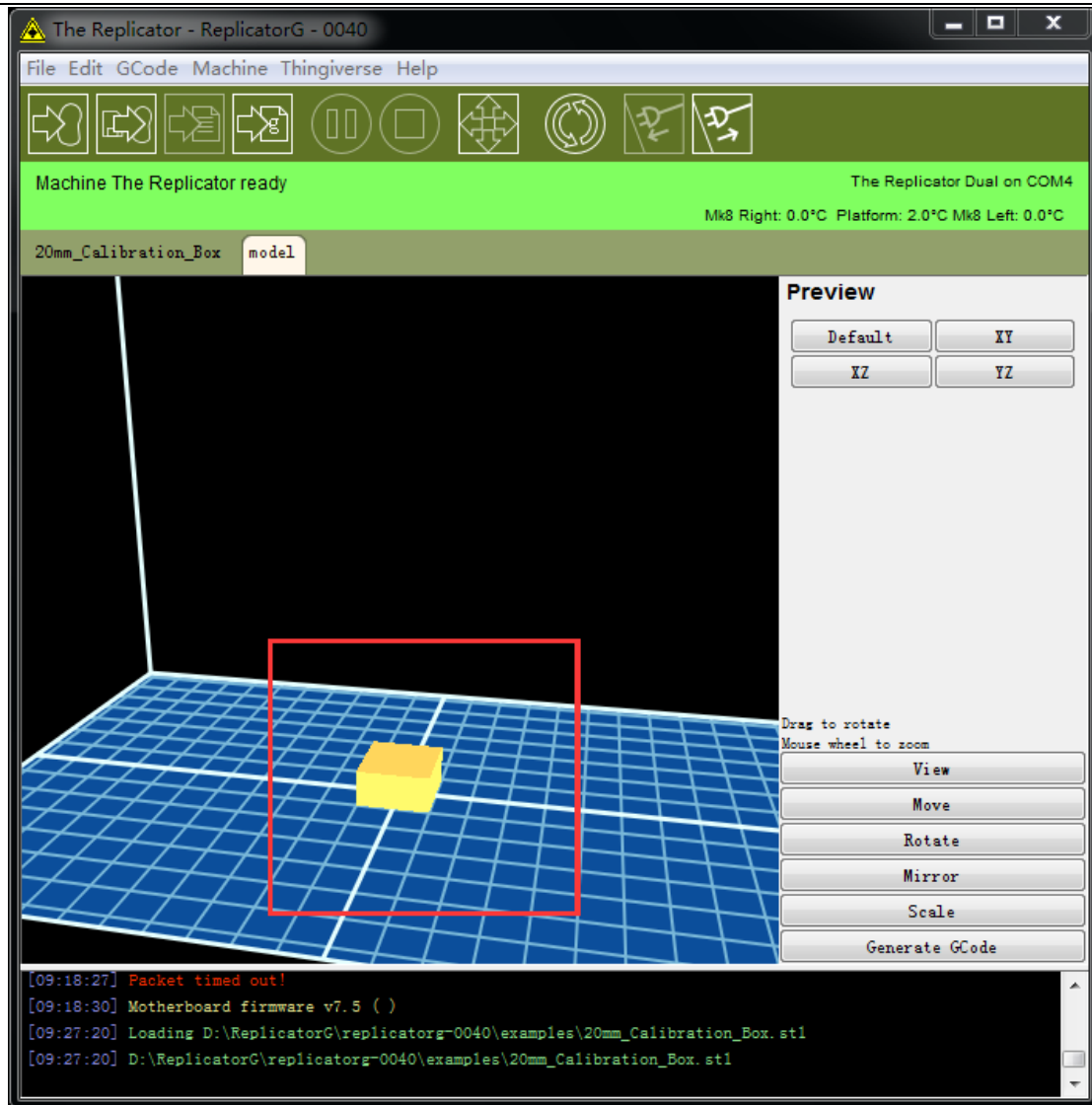


3-18

Choose “File” → “Examples” → “20mm_Calibration_Box.stl”, (3-19) and then the console panel appears the cube. (3-20)

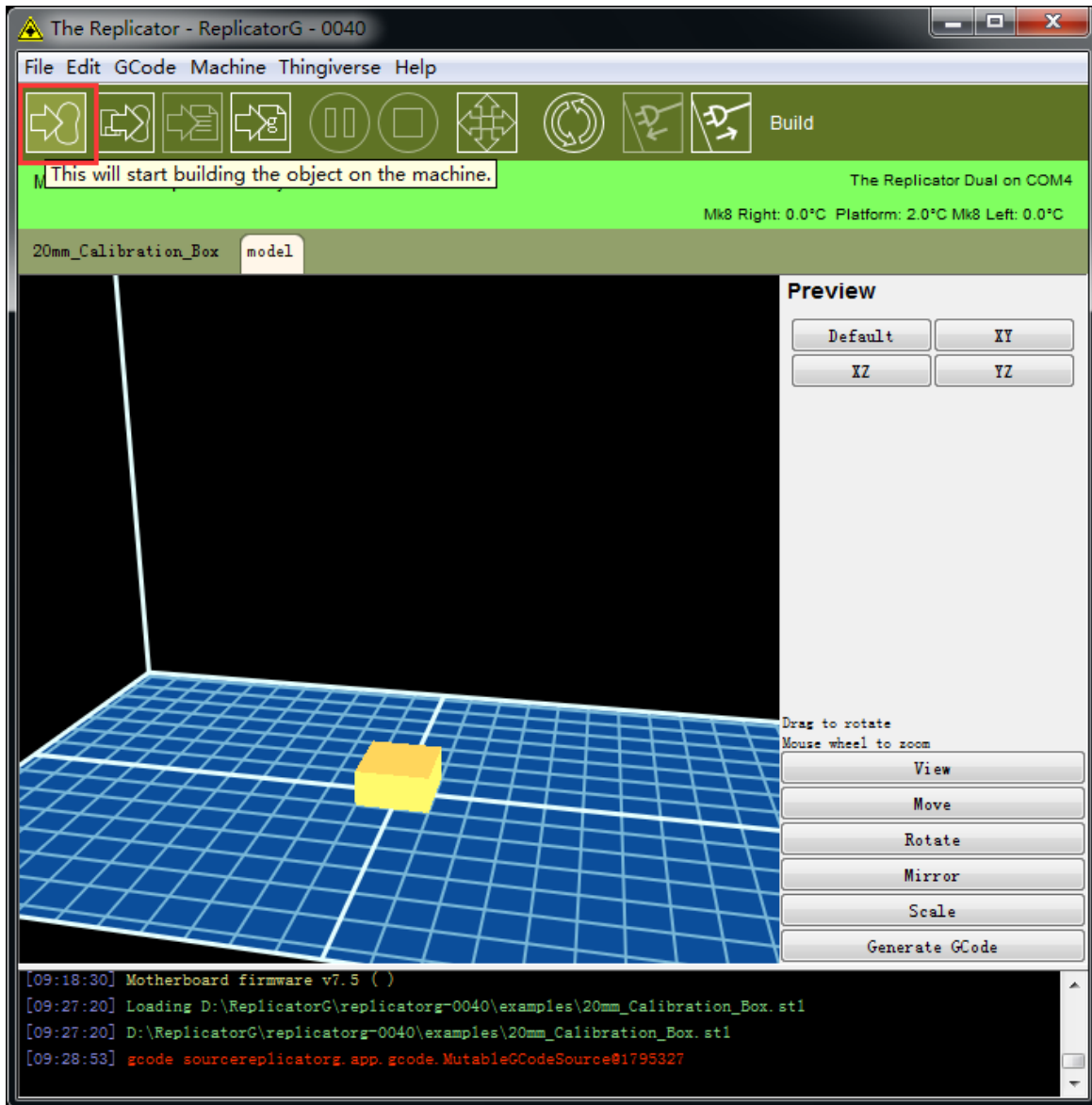


3-19



3-20

Click the button in the red frame to start printing, and then wait for the finish of printing. (3-21)



3-21

4 FAQs

Q: The computer can't detect the motherboard after connecting?

A: Check the connection status of USB port, and check whether the drive is installed successfully or not.

Q: Can't upgrade firmware?

A: Check whether the computer has connected to the motherboard successfully, and whether computer has recognized the COM of the motherboard or not.

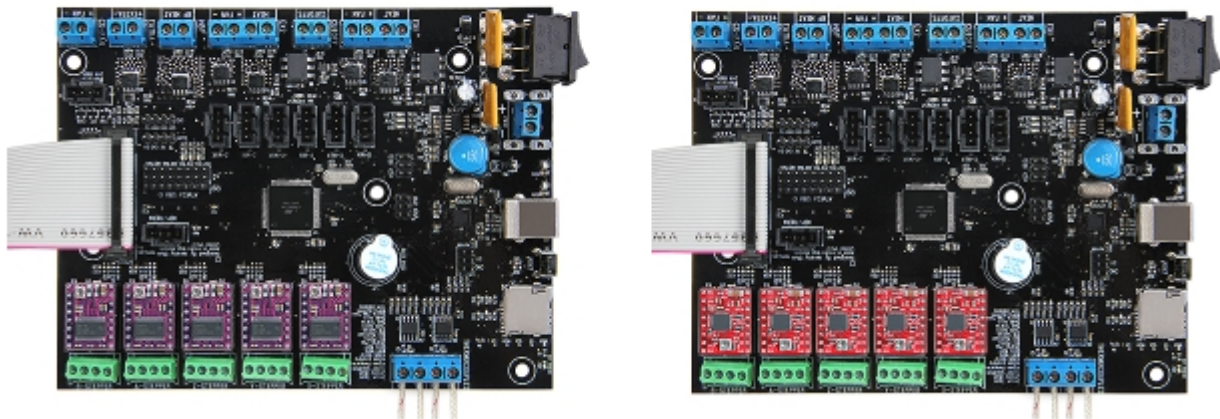
5 Attention:

Rev G is the upgraded version of Rev E,
the main difference between Rev G and Rev E is:

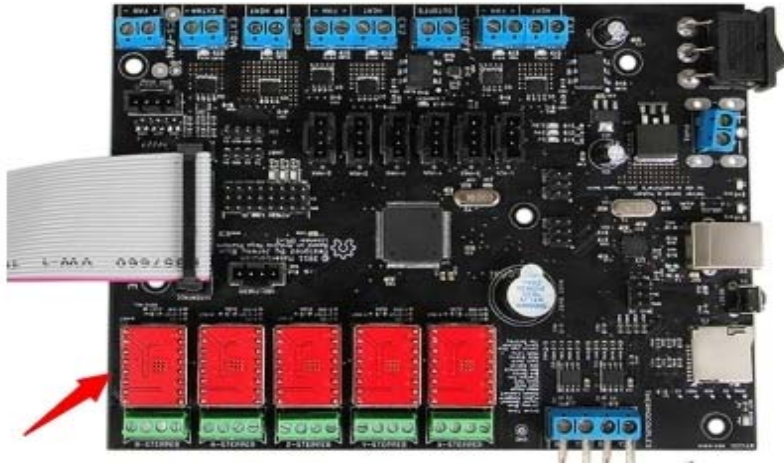
Motor drive direction of Rev G is forward direction, but that of Rev E is reverse.

Tips: This is very important. Pay attention to the version. If you are not sure, please notice the mark on the board. If you connect it in wrong direction, the board may get burned.

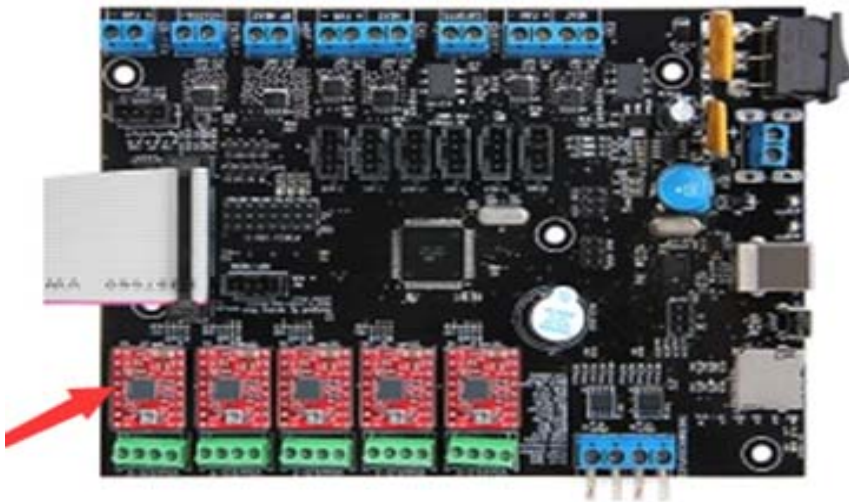
驱动和板子的安装方向图:



Picture of motor drive direction of Rev G and Rev E:



As shown in the picture, Rev E' s motor drive direction is forward direction



As shown in the picture, Rev G' s motor drive direction is reverse direction